

Authentic learning experiences

“Real places and real people, engaging with real-life issues relevant beyond the school gates... encouraging an application of learning.”

Experiences suitable for learners of different ages, abilities and aptitudes and ensuring learner progression.



The broad and balanced curriculum includes flexible outdoor learning opportunities, which benefits classroom learning and “summit” opportunities at the end of each “expedition” to promote authentic learning experiences.



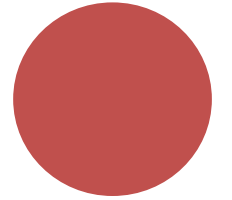
In Pentyrch, learning and teaching encompasses each of the AoLEs and entitles pupils to English, Welsh, RSE and RVE and cross curricular skills.

Expressive Arts	Health & Well-being	Humanities	Languages, Literacy & Communication	Mathematics & Numeracy	Science & Technology
WM1 Exploring the expressive arts is essential to developing artistic skills and knowledge and it enables learners to become curious and creative individuals.	WM1 Developing physical health and well-being has lifelong benefits.	WM1 Enquiry, exploration and investigation inspire curiosity about the world, its past, present and future.	WM1 Languages connect us.	WM1 The number system is used to represent and compare relationships between numbers and quantities.	WM1 Being curious and searching for answers is essential to understanding and predicting phenomena.
WM2 Responding and reflecting, both as artist and audience, is a fundamental part of learning in the Expressive Arts.	WM2 How we process and respond to our experiences affects our mental and emotional well-being.	WM2 Events and human experiences are complex, and are perceived, interpreted and represented in different ways.	WM2 Understanding languages is key to understanding the world around us.	WM2 Algebra uses the symbol systems to express the structure of relationships.	WM2 Design thinking and engineering offer technical and creative ways to meet society's needs and wants.
WM3 Creating combines skills and knowledge, drawing on the senses, inspiration and imagination.	WM3 Our decision-making impacts on the quality of our lives and the lives of others.	WM3 Our natural world is diverse and dynamic, influenced by processes and human actions.	WM3 Expressing ourselves through languages is key to communication.	WM3 Geometry focuses on relationships involving shape, space and position, and measurement focuses on quantifying phenomena in the physical world.	WM3 The world around us is full of living things which depend on each other for survival.
	WM4 How we engage with social influences shapes who we are and affects our health and well-being.	WM4 Human societies are complex and diverse, and are shaped by human actions and beliefs.	WM4 Literature fires imaginations and inspires creativity.	WM4 Statistics represent data, probability models chance, and both support informed inferences and decisions.	WM4 Matter and the way it behaves defines our universe and shapes our lives.
	WM5 Healthy relationships are fundamental to our well-being.	WM5 Informed, self-aware citizens engage with the challenges and opportunities that face humanity, and are able to take considered and ethical action.			WM5 Forces and energy provide a foundation for understanding our universe.
Curriculum for Wales; 27 What Matters Statements					WM6 Computation is the foundation for our digital world.

This approach encompasses the concepts set out in the statements of “what matters” intuitively and with purpose to match the needs of pupils in Pentyrch.



The bespoke approach, embedded in school practices, also considers the importance of pupils' mental health and emotional wellbeing, the conventions that entitle pupils to learn effectively through UNCRC and UNCRPD and that partnership working (e.g. with our collaboration partner, cluster schools) is integral to the success of the curriculum.



In Pentyrch, assessment lies at the heart of curriculum design.

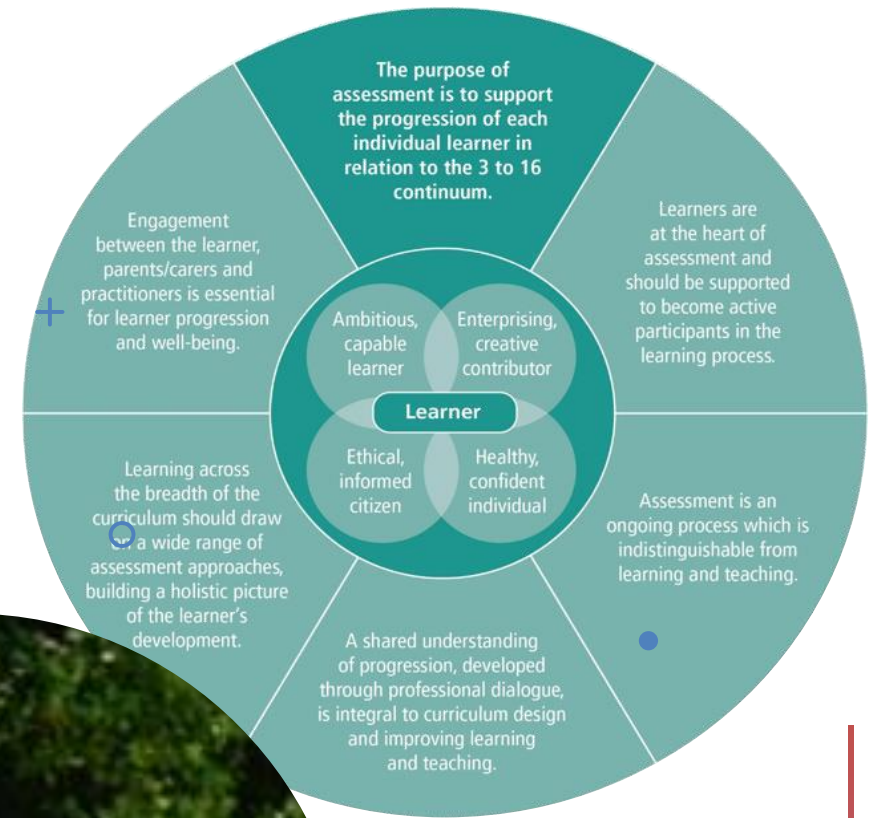
The principles of progression underpin our curriculum.

It's purpose is to ensure the progress of all learners through appropriate levels of support and challenge.

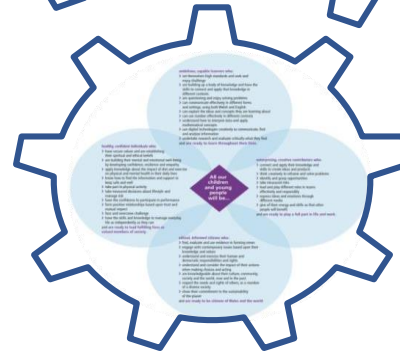
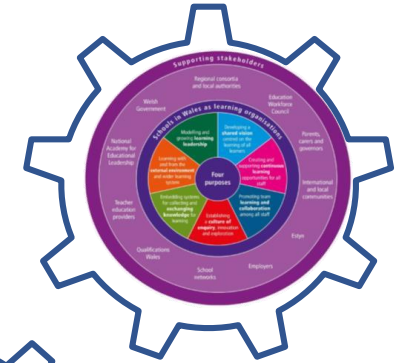
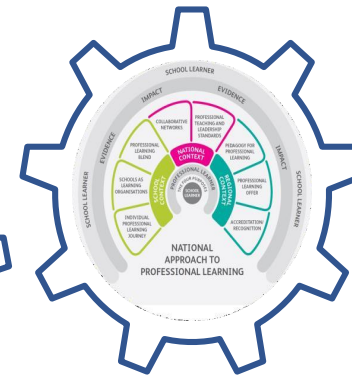
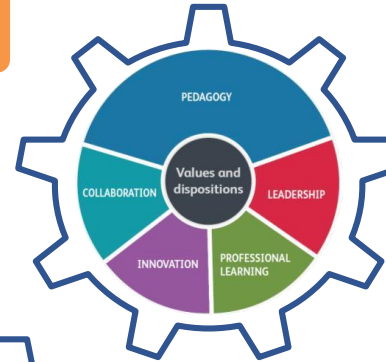
It is an integral part of all learning and teaching experiences.

Assessments are day to day practices and they are appropriate to all pupils. They are ongoing and start when a pupil begins at Pentyrch.

These assessments are used to support transition to other schools and to inform parents and carers about their child's progress.



Assessment



Accountability Review and evaluate –how will we know?



We use a range of self-evaluation exercises to ascertain the effectiveness of our curriculum and make changes as appropriate. Robust quality arrangements are in place to identify the school's strengths and areas for development

The Governing Body has adopted the curriculum and assessment arrangements with school staff, pupils, parents and carers has enhanced this process. It is reviewed regularly and it meets legal requirements. Other legislative requirements about learner choice and disapplication is available from the school and the Curriculum for Wales page on Hwb

Information of how practitioners, learners, parents, carers and wider community have been engaged to inform the curriculum development.



